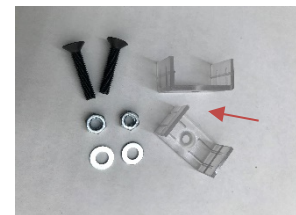
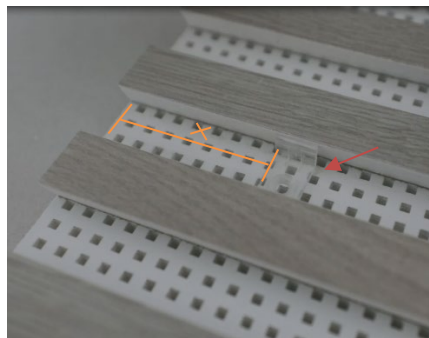
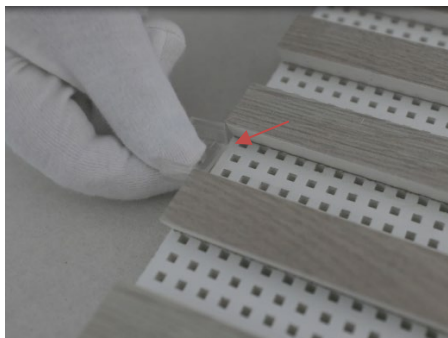
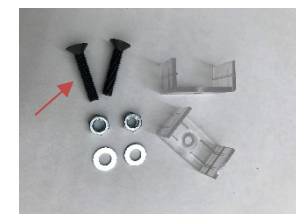
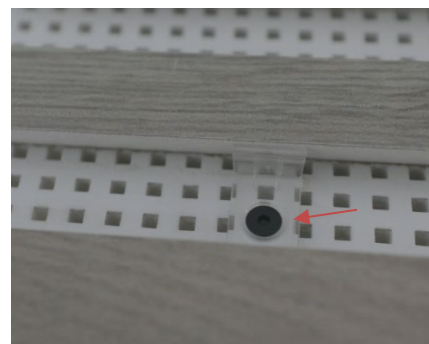
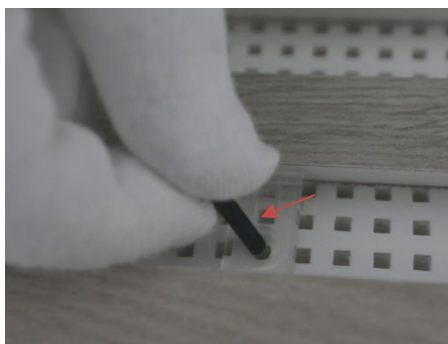


Point positioning of LED Lights according to the ceiling layout or wanted design.

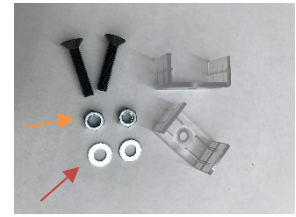
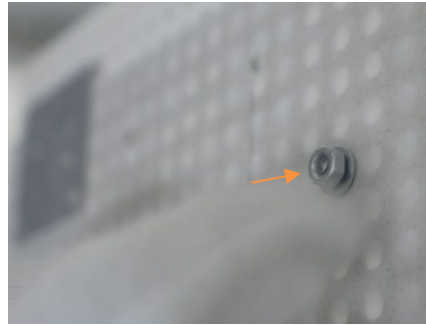
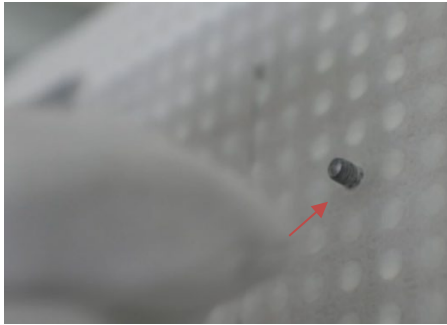
Installation steps:



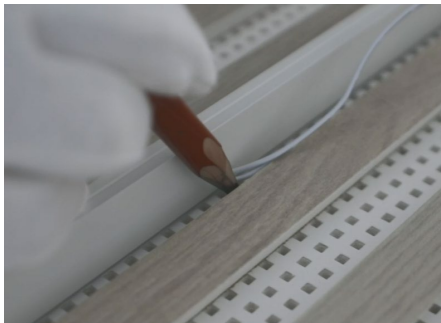
Slide in two brackets for each LED Light strip.
Place it according to X, min. 75mm and max 120mm from the edge.



Place the bolt in the bracket and push it through the perforation hole to the backside of the tile.



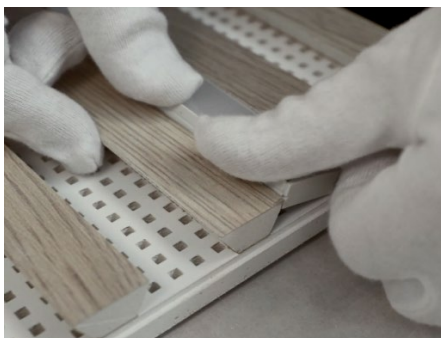
Place the washer over the bolt and fasten the nut on the backside of the tile.



Point and mark the location for the cable and break the acoustic fleece on the backside through the perforation hole.



Lead the cable through the perforation hole when placing the light strips over the brackets.



Push down to click the light strip into place and remove the protection film before installation.